

Notes

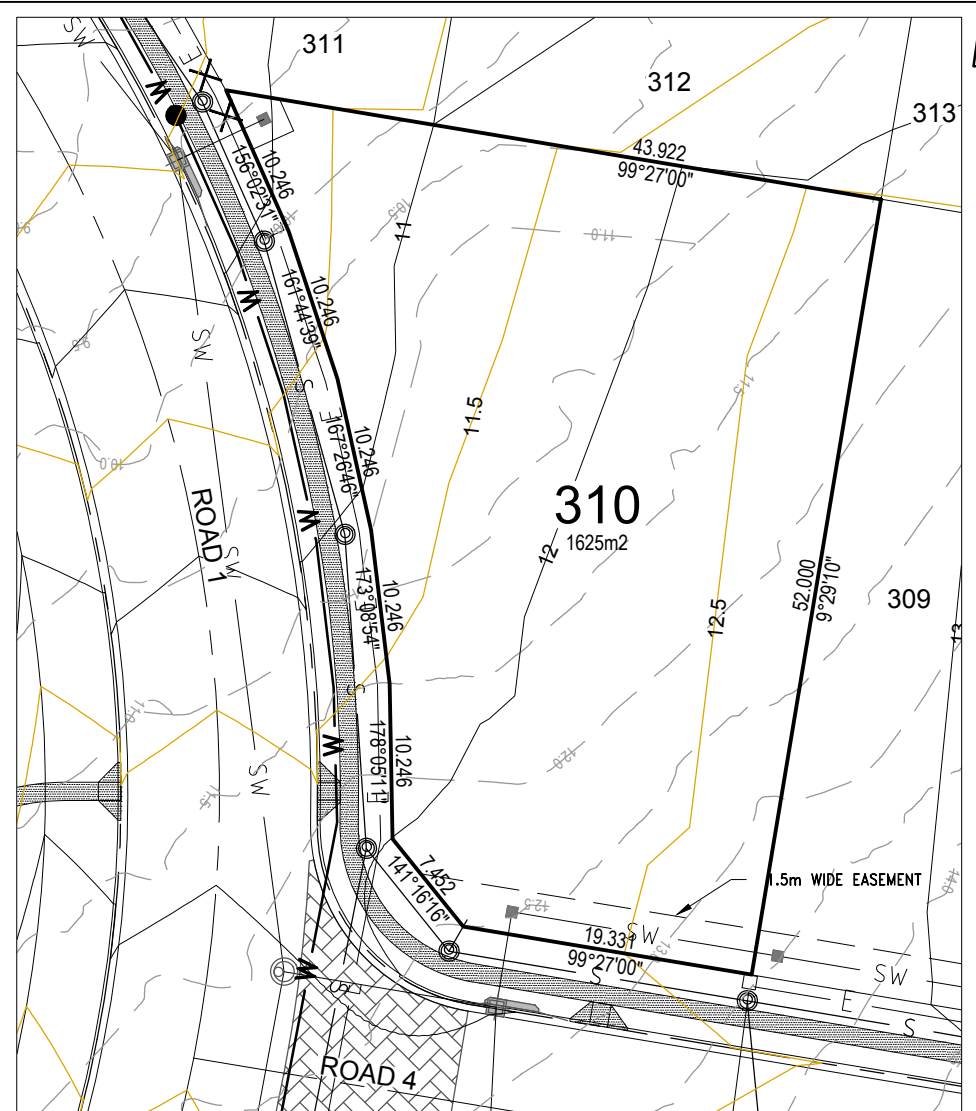
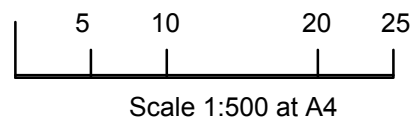
This plan was produced for the exclusive use of Thrumster Business Park. It is to be used as an attachment under the Land Sales Act to Sell / Reference freehold land "off the plan". This plan is subject to change to suit design requirements.

Any Earthworks Fill to be placed in accordance with the requirements of AS3798-2007 "Guidelines on Earthworks for commercial and residential and Industrial developments" – Level One supervision and testing.

All Dimensions and Areas are subject to Survey and final registration of the Survey Plan. All Services and Design Contours are derived from Cummings Group Pty Ltd engineering plans. Refer to any Easement information on the S88B Documents.

All Levels and Services are from design plans only. This plan is not suitable for building design purposes.

- LEGEND**
- (1.0H) PROPOSED RETAINING WALL (HEIGHT) IF SHOWN.
 - 1.5m WIDE CONCRETE FOOTPATH : / 2.5m WIDE CONCRETE SHARED PATH
 - WATER MAIN AND FIRE HYDRANT
 - WATER METER PER ALLOTMENT
 - SEWER MAIN AND MANHOLE / HOUSE CONNECTION
 - ELECTRICITY PILLAR AND LIGHT POLE
 - STORMWATER DRAINAGE PIPE
 - STORMWATER DRAINAGE KERB ADAPTOR
 - STORMWATER DRAINAGE GULLY PIT (IN ROAD)
 - STORMWATER DRAINAGE FIELD INLET PIT (IN LOT)
 - CONTOUR (EXISTING AT 0.5M)
 - CONTOUR (PROPOSED AT 0.5M)




LOT 310
Scale 1:500

Rev	Description	Drawn	Check	Date
D	Updated Finished Contours	FS	DC	15/06/2022
C	Finished Contours Amended	YL	DC	12/05/2022
B	Lot Amended (Previous Lot No 44)	YL	DC	23/09/2021
A	Original Issue	YL	DC	10/08/2021

Cummings Group Pty Ltd
 Consulting Engineers and Project Managers
 CummingsGroup@icloud.com

Thrumster Business Park



DISCLOSURE PLAN
PROPOSED: Lot 310
 (Existing Parcel: Lot 2 on DP1245588)

Project No. CG2108-02	
Drawing No. CG2108-02-DP310	
Date 15/06/2022	REV. D